

**International Conference and meeting of ICLAFI
(International Committee of Legal, Administrative and Financial Issues)
2015**



International Conference and meeting of ICLAFI (International Committee of Legal, Administrative and Financial Issues) 2015

SPA, Bhopal, India

19th to 23rd August, 2015.

Conference information

International Council on Monuments and Sites (ICOMOS) along with ICOMOS, India 2015 have jointly agreed to organise an International workshop and Committee meeting in India organised by School of Planning and Architecture, Bhopal from August 19th to 23rd, 2015. The conference is going to be attended by sixteen international experts from fifteen countries. The theme of the workshop is *“Legal and Administrative framework for protection of heritage”*

19th August, 2015: Arrival and Registration
Optional: Excursion to Sanchi WHS or Bhimbetka WHS on payment

20th and 21st August, 2015: Presentation and Interactive Sessions

22nd August, 2015: Excursion in and around Bhopal

23rd August, 2015: Departure
Optional: Excursion to Sanchi WHS or Bhimbetka WHS on payment

Registration Details

- Registration Fees for Professionals INR 7000/- (Refer to facilities provided by SPA Bhopal for details)
- Registration Fees for Students INR 1500/- (Refer to facilities provided by SPA Bhopal for details. The accommodation for students shall be arranged at SPA Bhopal hostels)
- Site visit to either Sanchi WHS or Bhimbetka WHS each on 19th or 23rd August 2015 : INR 5000/- each in addition to registration fee.
- On request Registration fees for Professional participants not requiring facility of accommodation and travel INR 1500/-
- Bank details: Canara bank, Bhauri branch
- Account no.: 4725201000009
- IFSC: CNRB0004725



Venue

School of Planning and Architecture
Neelbad Road, Bhauri, Bhopal – 462030
Phone No 00917024 212568



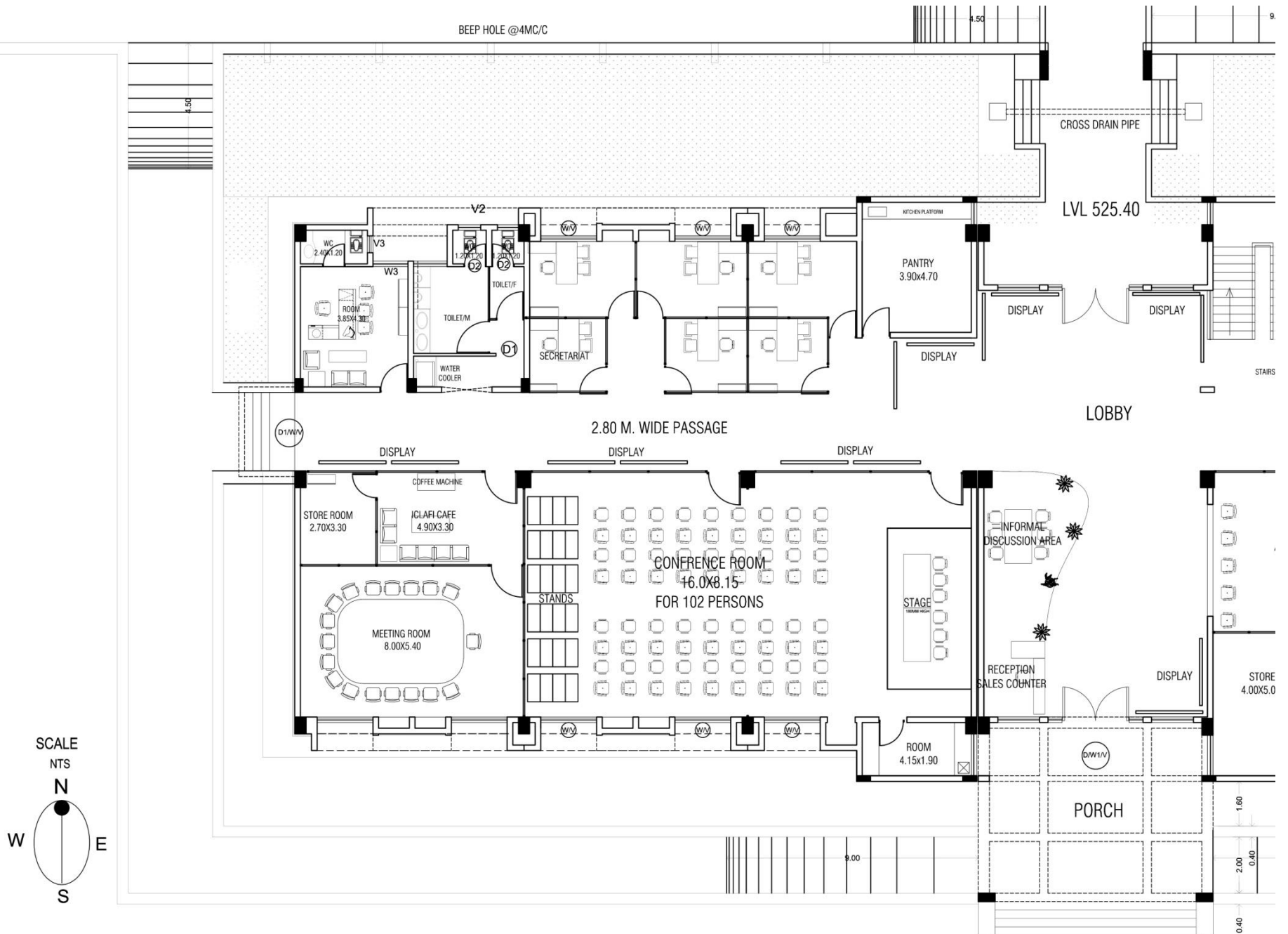
Campus of SPA Bhopal

**Meeting Room for ICLAFI
Annual Meet**



The Seminar Hall





Layout of the venue where activities related to ICLAFI conference are to be held

Facilities Provided by SPA Bhopal

Accommodation



Guest House RGPV University (Rajiv Gandhi Proudhyogiki Vishwavidyalaya)
Airport Bypass Road, Gandhi Nagar, Bhopal, Madhya Pradesh 462036

Pick Up and Drop from Airport/ Railway Station

Travel between Venue and place of accommodation

24 hrs Tea and coffee at SPA Bhopal Venue

Food

Secretariat Services



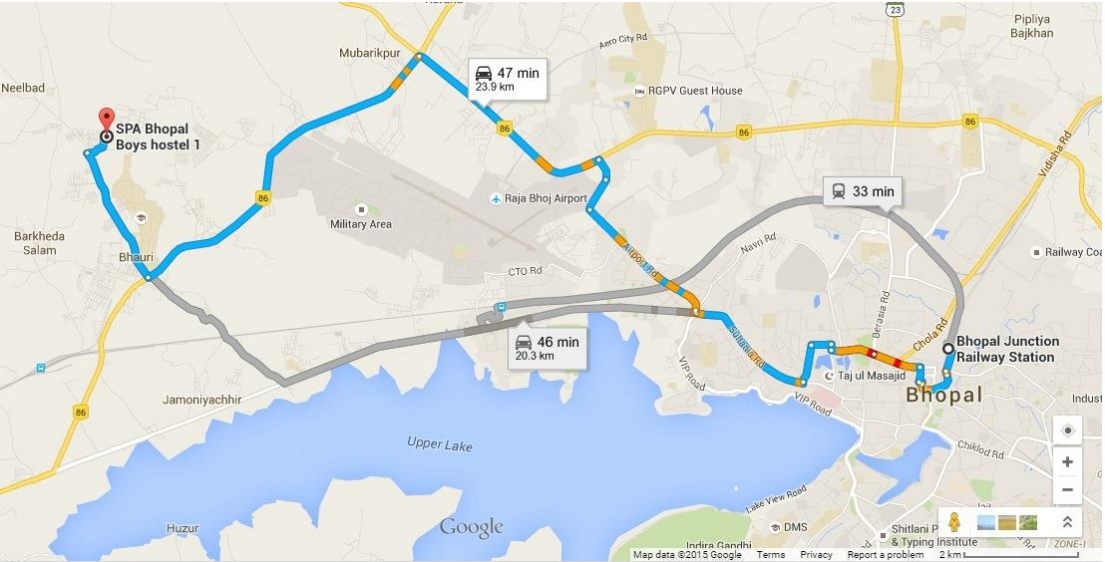
Arrival (How to reach SPA Bhopal)



From Raja Bhoj International Airport to SPA Bhopal



From Bhopal Junction Railway Station



Bhopal : Historic City with modernity

Bhopal is the capital city of Madhya Pradesh State in India. It is known for its scenic beauty, judicious planning and the Nawabi (an Islamic princely state) character. What makes the city unique is that Bhopal was ruled by a series of women rulers, very rare in India. The culture of the place is multifaceted with the old Bhopal full of historic buildings and new Bhopal of modern buildings. The built environments also have distinct characters as in old Bhopal is high on Islamic culture with dialect of Bhopal Language spoken, men and women in traditional dress, cuisine all preserving the legacy of the times. The new Bhopal has buildings designed by renowned architects, state-of-the-art museums and cultural and educational centres. The rich cultural traditions and the thriving education and political activities make the city worth a visit. Yet most people across the globe associate the Bhopal Gas Tragedy, which took place at the Union Carbide Factory plant in the outskirts of the city in December, 1984. The city is perfectly safe for a visit.



Night View of the historic city from new Bhopal



The palace complex in the historic city

Hotels in Bhopal

Hotel Jehan Numa Palace

157, Shamala Hills, Bhopal - 462013 Madhya Pradesh (India)

<http://www.jehannuma.com/>

Hotel Noor-us-Sabah Palace

VIP Road, Koh-e-fiza, Bhopal 462001

<http://www.noorussabahpalace.com/>

Hotel Lake View Ashok

Shyamla Hills, Bhopal- 462013

<http://lakeviewashok.com/>

Jehan Numa Retreat

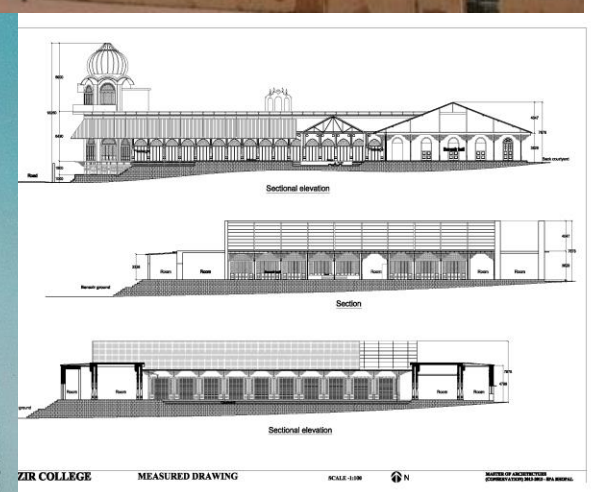
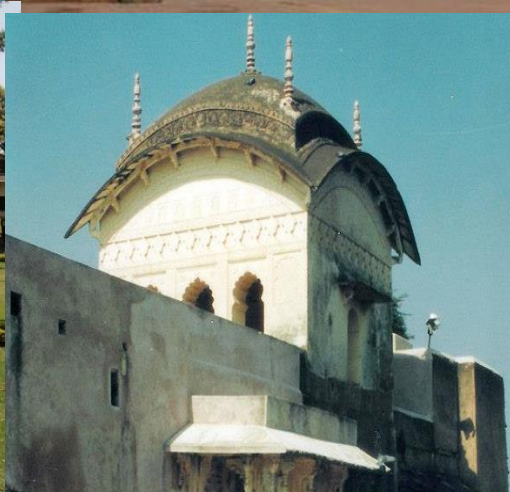
Near Van Vihar, Dr Salim Ali Rd, Prempura, Bhopal, 462002

<http://www.jehannuma.com/JehanNumaRetreat/>



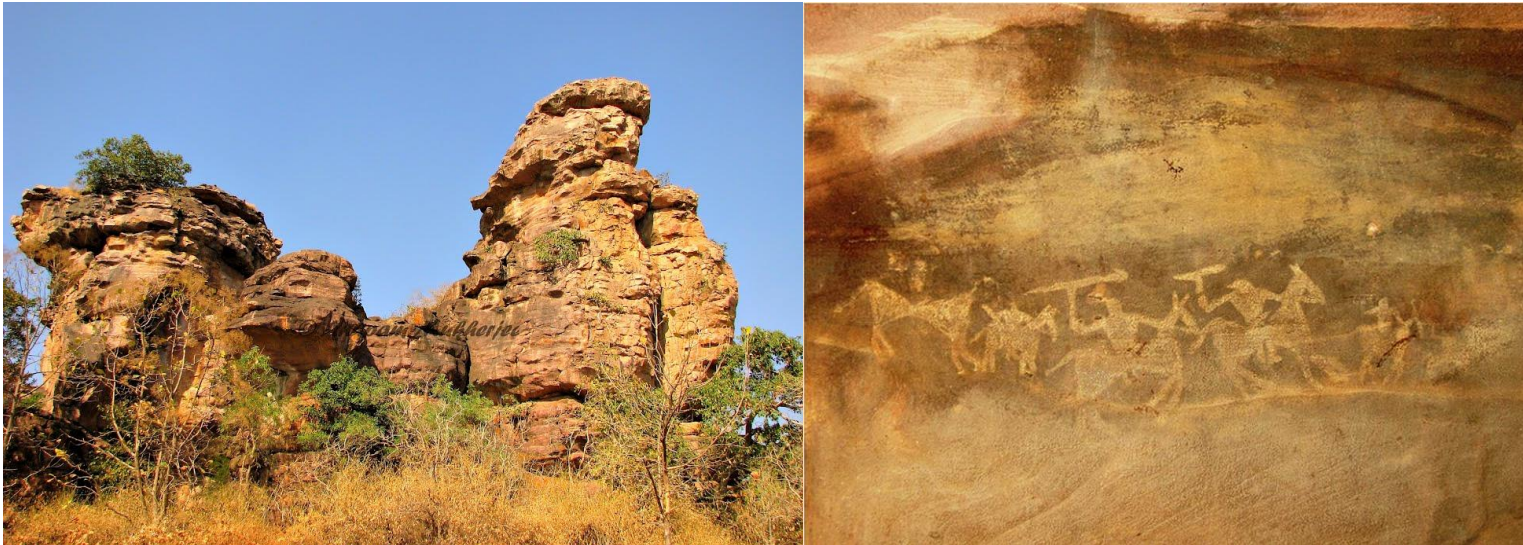
Tour on heritage in Bhopal

School of Planning and Architecture, Bhopal has organised an exclusive excursion to monuments and sites of historic and cultural interest around Bhopal.



Rock Shelters of Bhimbetka

The Rock Shelters of Bhimbetka are Within massive sandstone outcrops, in a dense forest with clusters of natural rock shelters, displaying paintings that appear to date from the Mesolithic Period.

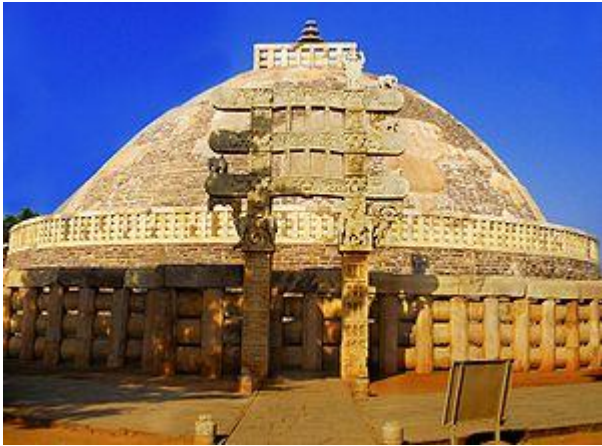


For more information refer to: <http://whc.unesco.org/en/list/925>



Buddhist monuments at Sanchi

Located on a hill overlooking the plain the site of Sanchi comprises a group of Buddhist monuments (monolithic pillars, palaces, temples and monasteries) all in different states of conservation most of which date back to the 2nd and 1st centuries B.C. It is the oldest Buddhist sanctuary in existence and was a major Buddhist centre in India until the 12th century A.D.



- For more information refer to: <http://whc.unesco.org/en/list/524>



Contact and Institutions

Organisers:



योजना एवं वास्तुकला विद्यालय, भोपाल
राष्ट्रीय महत्व का संस्थान, भारत सरकार का स्वायत्तशासी संस्थान

School of Planning and Architecture, Bhopal
An Institute of National Importance, Created by an Act of Parliament.

Partners:

ICOMOS
INDIA



TM



SCHOOL OF PLANNING AND ARCHITECTURE
(Deemed University)

4, Block-B, Indraprastha Estate, New Delhi-110 002
Tel: 011-23702375-80, Fax: 011-23702383



ARCHAEOLOGICAL SURVEY OF INDIA

Contact us:

Dr. Vishakha Kawathekar, Convenor, ICLAFI 2015

Ph: 0091-9009240227

e-mail: vishakhakawathekar@spabhopal.ac.in

Ar. Ramesh Bhole, Co-ordinator, ICLAFI 2015

Ph: 0091-9589235598

e-mail: rameshbhole@spabhopal.ac.in

Ar. Nitin Sinha, Co-ordinator, ICLAFI 2015

Ph: 0091-9392482481

e-mail: r.nitinsinha@gmail.com

Mrs. Vaishali Hedao, Secretariat, ICLAFI 2015

Ph: 0091-9425600076

e-mail: vaishali.hedao@spabhopal.ac.in

